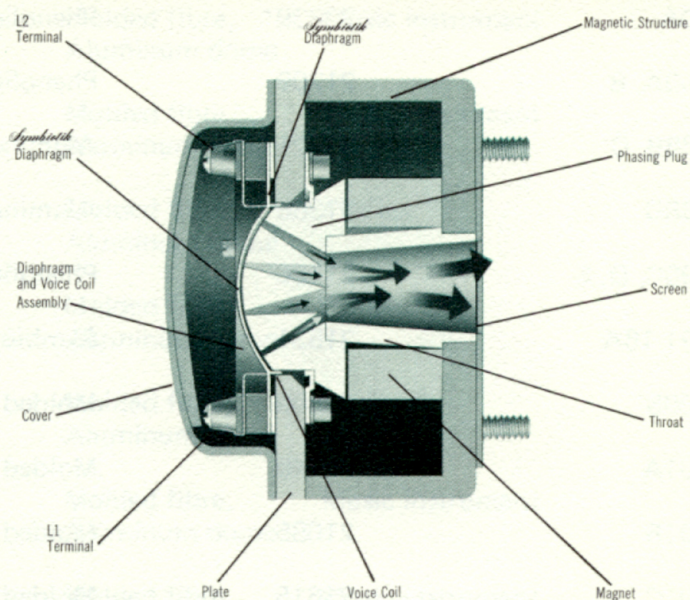
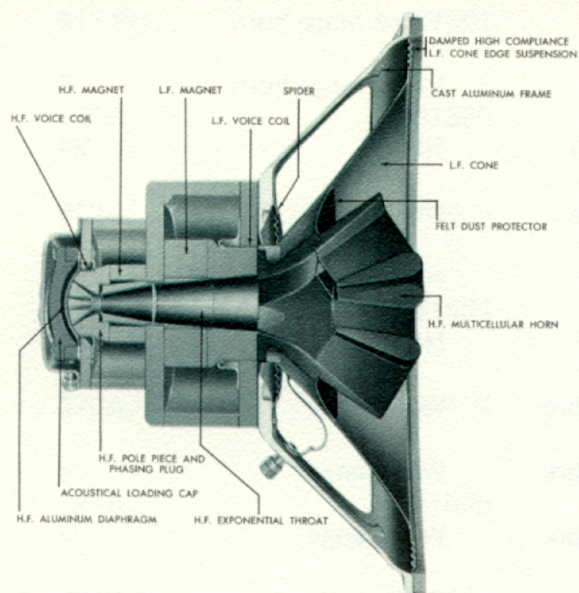


Diaphragm and Voice Coil Assemblies



DIAPHRAGM AND VOICE COIL ASSEMBLIES

LF AND WIDE RANGE DIAPHRAGM AND VOICE COIL ASSEMBLIES

ALTEC LF diaphragm and voice coil assemblies are designed for voice-range, wide-range, music instrument, pancake, Biflex®, Duplex®, and low-frequency loudspeakers. Voice coils are edge-wound with aluminum or copper ribbon, or round wire and are of the largest practical diameter. Design and materials used in the voice coils conform to the latest advances in transducer technology. Low-frequency woofers have exceptionally compliant cone suspensions. Unparalleled uniform response over the full excursion assures clarity of bass reproduction at high power levels. Diaphragm and voice coil assemblies for ALTEC LF cone-type loudspeakers are not field replaceable and should be sent to an ALTEC Qualified Service Representative for repair.

HF DIAPHRAGM AND VOICE COIL ASSEMBLIES

ALTEC HF diaphragm and voice coil assemblies are designed for the drivers used with high-frequency sectoral or multicellular exponential horns. Voice coils are edge-wound with alumi-

num or copper ribbon, or round wire and are of the largest practical diameter. Diaphragms are aluminum or are made with ALTEC's new and exclusive Symbiotik™ construction. The Symbiotik diaphragm assemblies, specially developed by ALTEC, add greater power handling capacity to the superb quality and high efficiency developed in standard driver units. The Symbiotik design is inherently rugged. All these features combine to ensure long life and maximum high-frequency reproduction while maintaining smooth overall response.

ALTEC driver loudspeakers incorporate self-centering dowels to enable field replacement of the entire diaphragm and voice coil assembly without use of special tools.

LISTING OF ALTEC DIAPHRAGM AND VOICE COIL ASSEMBLIES

The diaphragm and voice coil assemblies for ALTEC loudspeakers are listed on the following page. Care should be exercised when making a replacement because these assemblies are extremely delicate until they are properly mounted.



A quality company of LTV Ling Altec, Inc.

1515 S. Manchester Ave., Anaheim, Calif. 92803

New York

Loudspeaker Model No.	Diaphragm/Voice Coil Assembly No.	Diaphragm Type	Loudspeaker Type	Impedance in Ohms
50A	20839*	Phenolic	Voice range horn	8
150A, B	21209	Phenolic	Voice range horn	8
288B, C	20221	Aluminum	HF	24
288D	21368	Aluminum	HF	16
290C, D, E	21136	Phenolic	HF	4
291-16A	21531	Symbiotik	HF	16
400B	20509	Molded fibre	Wide range	8
401A	20748	Molded fibre	Wide range	8
401B	21085	Molded fibre	Wide range	8
401C	21615	Molded fibre	Wide range	8
402A, B, C, D	20882	Molded fibre	LF	8
404A	21274	Molded fibre	LF	8
406A	21342	Molded fibre	LF	8
406B, Z	21366	Molded fibre	LF	8
406-8C	21610	Molded fibre	LF	8
408A	20733	Molded fibre	LF	8
411-8A	21696	Molded fibre	LF	8
412C	21103	Molded fibre	"Biflex"	8
412-8D	21595	Molded fibre	"Biflex"	8
413-8A	21735	Molded fibre	LF	8
414A, Z	21066	Molded fibre	LF	16
414-16B, -16Y	21590	Molded fibre	LF	16
414-8B, -8Y	21553	Molded fibre	LF	8
415A, B, C	21100	Molded fibre	"Biflex"	8
416A, Z	20884	Molded fibre	LF	16
416-8A, -8Z	21554	Molded fibre	LF	8
417A, B	21327	Molded fibre, Aluminum dome	Music instrument	8

*Driver Assembly — diaphragm and voice coil assembly not field replaceable

Loudspeaker Model No.	Diaphragm/Voice Coil Assembly No.	Diaphragm Type	Loudspeaker Type	Impedance in Ohms
417-8C	21591	Molded fibre, Aluminum dome	Music instrument	8
418A, B	21355	Molded fibre, Aluminum dome	Music instrument	8
419A	21404	Molded fibre, Aluminum dome	"Biflex"	8
419-8B	21594	Molded fibre, Aluminum dome	"Biflex"	8
420A, Y	21405	Molded fibre, Aluminum dome	"Biflex"	8
421A	21505	Molded fibre, Aluminum dome	Music instrument	8
422-4Z	21475	Molded fibre, Aluminum dome	Music instrument	4
422-8Z	21605	Molded fibre, Aluminum dome	Music instrument	8
423-4Z	21475	Molded fibre, Aluminum dome	Music instrument	4
423-8Z	21605	Molded fibre, Aluminum dome	Music instrument	8
515	20248	Molded fibre	LF	16
515B	21092	Molded fibre	LF	16
555	20303	Aluminum	HF	16
600B	20464	Molded fibre	LF	8
601C	21073	Molded fibre (LF only)	"Duplex"	8
601C	21073 (LF only)	Molded fibre	"Duplex"	8
601-8D	21596 (LF only)	Molded fibre	"Duplex"	8
602D	21106 (LF only)	Molded fibre	"Duplex"	8
603B	20419	Molded fibre	LF	16
604B, C, D, E	20275 (HF only)	Aluminum	"Duplex"	16
	20969 (LF only)	Molded fibre		

ALTEC Diaphragm and Voice Coil Assemblies

Loudspeaker Model No.	Diaphragm/Voice Coil Assembly No.	Diaphragm Type	Loudspeaker Type	Impedance in Ohms
605A, B	20275 (HF only) 20969 (LF only)	Aluminum Molded fibre	"Duplex"	16
615A, B, B/A	20275 (HF only) 21247 (LF only)	Aluminum Molded fibre	"Duplex"	16
713C	BL-163147	Aluminum	HF	4
720A	ES-670-650-2	Phenolic	HF	8
730A	20555	Phenolic	HF	8
730B	21127	Phenolic	HF	8
730C	21209	Phenolic	HF	8
755A	B0-162761	Molded fibre	"Pancake"	8
755C, D, E	21021	Molded fibre	"Pancake"	8
802B, C, D	20275	Aluminum	HF	16
802-8D	21597	Aluminum	HF	8
803A	20476	Molded fibre	LF	16
803B	20884	Molded fibre	LF	16
804A, B	20275	Aluminum	HF	16
806A, Z	20275	Aluminum	HF	16
806-8A	21597	Aluminum	HF	8
807-8A, -8Z	21545	Symbiotik	HF	8
807-4A, -4Z	21466	Symbiotik	HF	4
808-8A, -8Z	21545	Symbiotik	HF	8
808-4Z	21466	Symbiotik	HF	4
808-16A	21569	Symbiotik	HF	16

NOTICE
We recommend that you obtain your Altec products from factory trained authorized Altec Sound Contractors and Distributors. This will assure you of proper installation, a continuing source of knowledgeable advice, service, and quick warranty protection.